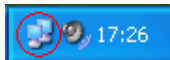


- 7) Select "T-Modem" in the modem list in "Properties" dialog box.
- 8) It is very important to enter APN (applies only to GPRS / EDGE connections). Run T-Modem Control Tool and click GPRS->Settings. Enter the APN in the dialog box. **Your operator may ask you to enter a special string like "AT+CGDCONT=..." as modem extra initialization command. This step is equivalent to setting APN in T-Modem Control Tool, so you must perform only one of the two steps.**
- 9) Internet connection is set up successfully.

#### 4. Connecting to the Internet.

- 1) Check if the device is connected to the PC and both red and green LEDs on the device are on and not blinking.
- 2) Click "Start->Settings".
- 3) Double click "Network connections" (WinXP), "Network and dial-up connections" (Win2000), "Dial-up connections" (Win95/98/ME).
- 4) Double click the connection you have just created.
- 5) Click "Dial".
- 6) You should get connected to the Internet in a few seconds. If the connection is successful, you will see a connection indicator (two green or blue small computers) in the system tray (lower right corner of the screen).
- 7) When you want to disconnect, double click the connection indicator and click "Disconnect".



#### 5. Sending SMS.

**Note: please make sure that your operator supports SMS service.**

**Note: please ensure that SMS centre number is defined** it (T-Modem Control Tool, SMS -> Settings). If it isn't, ask your GSM operator for SMS centre number and enter.

- 1) Run T-Modem Control Tool.
- 2) Click SMS->Send.
- 3) Enter recipient phone number.
- 4) Enter the text.
- 5) Click "Send".
- 6) Wait for a dialog box, which will inform you about successful or unsuccessful procedure.

#### TROUBLESHOOTING

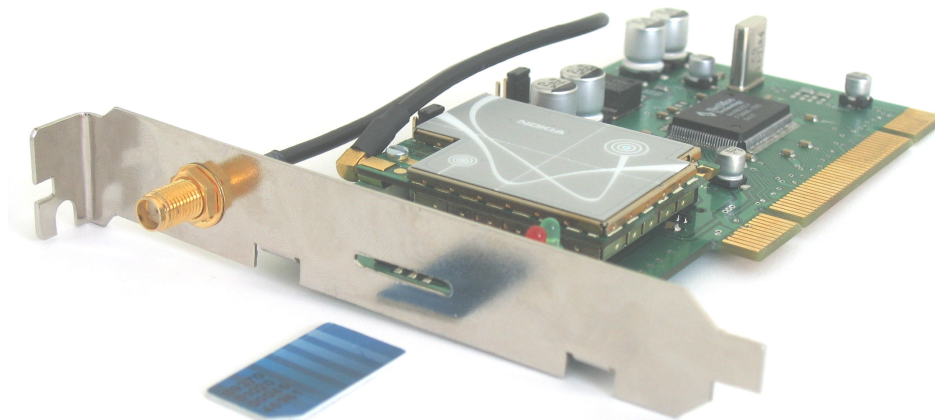
- 1) Problem: T-Modem Control Tool doesn't detect the modem.  
Solution: Check if the device is connected and that both red and green LEDs are on.
- 2) Problem: Can't connect to the Internet.  
Solution: Check if the drivers are installed properly.

#### FINAL NOTES

For more information, please read T-ModemPCI User Manual, which is found on the CD.

If you encounter any problems when using our products, please contact our technical support by writing e-mail to [support@teltonika.lt](mailto:support@teltonika.lt). We will be pleased to help you.

T-ModemPCI



Thank You for purchasing T-ModemPCI from TELTONIKA Ltd. We hope you will be happy using our product. Please find a few minutes to read this Quick Start Guide before beginning to work with T-ModemPCI. This could prevent you from unwanted problems and save your precious time.

T-ModemPCI is a device with GSM / GPRS / EDGE / CSD / HSCSD connectivity which enables your computer to connect to the Internet quickly and easily. Having this device your PC will have Internet connection in any place of the world, where GSM network is accessible.

## CONTENTS OF YOUR PACKAGE

- 1) T-ModemPCI,
- 2) A CD (including drivers and User Manual),
- 3) A Quick Start Guide,
- 4) GSM antenna.

If you miss any of the components listed, please contact your local representative.

## HOW TO START QUICKLY?

### 1. Hardware setup.

- 1) Plug T-ModemPCI into your PC:
  - a) Before you install the PCI card, make sure your computer is turned off.
  - b) Take the cover of your computer. You will probably have to remove several screws on the back of the case.
  - c) Remove the cover plate from an available PCI slot. (You'll have to remove another couple of screws.)
  - d) Insert the modem firmly into an available PCI slot.
  - e) Replace the computer cover, but do not turn the power on yet.
- 2) Insert SIM card to the device and ensure that you pulled SIM **card to the end**. Now you can turn on the computer. Please be careful **not to move the card during device operation**, as this would drop any active connections and modem reboot will be required.
- 3) Plug GSM antenna into T-ModemPCI antenna switch-plug.

### 2. Setting up software and driver for Microsoft Windows 95/98/ME/2000/XP.

#### 2.1. Installing modem drivers.

- 1) Switch your PC on and boot Microsoft Windows.
- 2) Please ensure that you have successfully completed hardware setup of the device.
- 3) Just after plugging modem, Windows will detect a "T-ModemPCI" device.
- 4) **WinXP:**
  - a) Windows will automatically detect, and starts installing "T-ModemPCI", "NetMos9835 PCI Multi-I/O Controller", "NetMos PCI Serial Port" and "NetMos PCI Parallel Port". Windows XP already has these drivers and should perform this step without user intervention (just select recommended items). Occasionally, if you are asked for the drivers or want to install newer drivers, point to the folder "\\Drivers\\T-ModemPCI\\WindowsXP" on the CD.
  - b) Windows will detect the drivers he needs and ask you to install drivers.
  - c) If you are asked whether you want to "Connect to windows Update to search for new software", click "No", as it doesn't contain drivers for T-ModemPCI.
  - d) Select "Install from a list or specific location (Advanced)" in the next dialog. Click "Next".
  - e) Select "Search for the best driver in these locations" and check "Include this location in the search". Click "Browse" and point to CD folder "\\Drivers\\T-ModemPCI\\WindowsXP". Select file you'll be asked. Click "Next".
  - f) If you are warned that the driver has not passed Windows Logo testing, click "Continue Anyway". Click "Finish".

#### Win95/98/ME/2000:

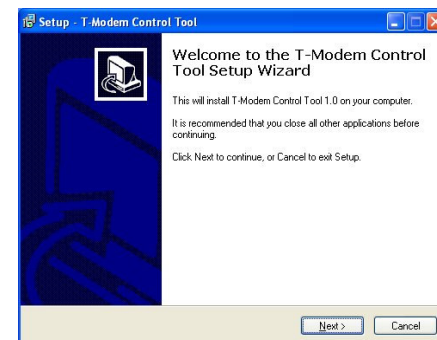
- 1) Windows will automatically detects new hardware and ask for drivers for "T-ModemPCI", "NetMos PCI Serial Port". Click "Next".
- 2) Select "Search for the best driver of your device (recommended)" and click "next".
- 3) Click "Specify a location" and then "Browse". Point to CD folder "\\Drivers\\T-ModemPCI\\WindowsXX". Select file "T-ModemPCI.inf".
- 4) Computer will detect the driver for modem "NetMos PCI 9835 Multi-I/O Controller".

5) Click "Next"

6) If the modem drivers have successfully been installed. You may be asked to restart your computer.

### 2.2. Installing T-Modem Control Tool.

- 1) Insert the CD, which is found in the package, into your PC CD tray.
- 2) An installation program will launch automatically. If it doesn't, open My Computer and double click on the CD-ROM drive. The setup program is located in folder "\\Software\\".
- 3) Click "Next" in 3 upcoming dialog boxes.
- 4) Click "Install" in final dialog box.
- 5) Leave checkbox "Launch T-Modem" checked and click "Finish".
- 6) Click "Search for T-Modem" in the T-Modem Control Tool.
- 7) The program will detect the device and show the COM port, to which the device is connected.
- 8) Installation of the T-Modem Control Tool is complete.



### 3. Adding a new modem

- 1) Click "Start->Settings-> Control Panel"
- 2) Double click "Modems" and in the opened dialog box click "Add".
- 3) In the "Install New Modem" dialog box click "Next" and wait while Window detects your new modem, if not click "Change".
- 4) When Click "Browse" and point to CD folder "\\Drivers\\T-ModemPCI\\WindowsXX". Select file "T-ModemPCI.inf". Click "Next" and "Finish".

### 4. Setting up an Internet connection.

Please consult your GSM operator for detailed instructions on how to get connected to the Internet. You should ask the operator to switch on the desired service (GPRS/EDGE or HSCSD) for your SIM card and to tell you how to configure your PC. The required parameters for connection are: **phone number, username, password and APN** (APN for GPRS/EDGE only).

There are two basic types of connections, which are different in the way they are paid for:

- Pay-for-time connection (CSD, HSCSD). You pay for the time you spend in the Internet. The speed is up to 14,4 kbps (CSD) or 43,2 kbps (HSCSD).

Pay-for-data connection (GPRS, EDGE). You pay for the data you transfer. The maximum speed depends on the operator, but it may reach 115 kbps. If your operator supports higher speed and you want to reach it, you should use a COM port with higher baud rate (PCI-COM adapter).

#### 4.1. Setting up networking protocol and dial-up.

- 1) Please ensure that Dial-up networking is installed on your PC.
- 2) Please ensure that TCP/IP protocol is installed on you PC.

#### 4.2. Setting up a dial-up connection.

**Note: this step will be successful only if dial-up and TCP/IP protocol are installed.**

- 1) Click "Start->Settings->Control Panel".
- 2) Double click "Network connections-> New Connection Wizard (select Dial-up connection)" (WinXP), "Network and dial-up connections" (Win2000), "Dial-up connections" (Win95/98/ME).
- 3) Click "Create a new connection".
- 4) Type in a desired name for connection, e.g. "GSM Internet".
- 5) Enter the given phone number (usually \*99\*\*\*1# or \*99# for GPRS / EDGE).
- 6) Enter Username and password, which are given by your GSM operator.

